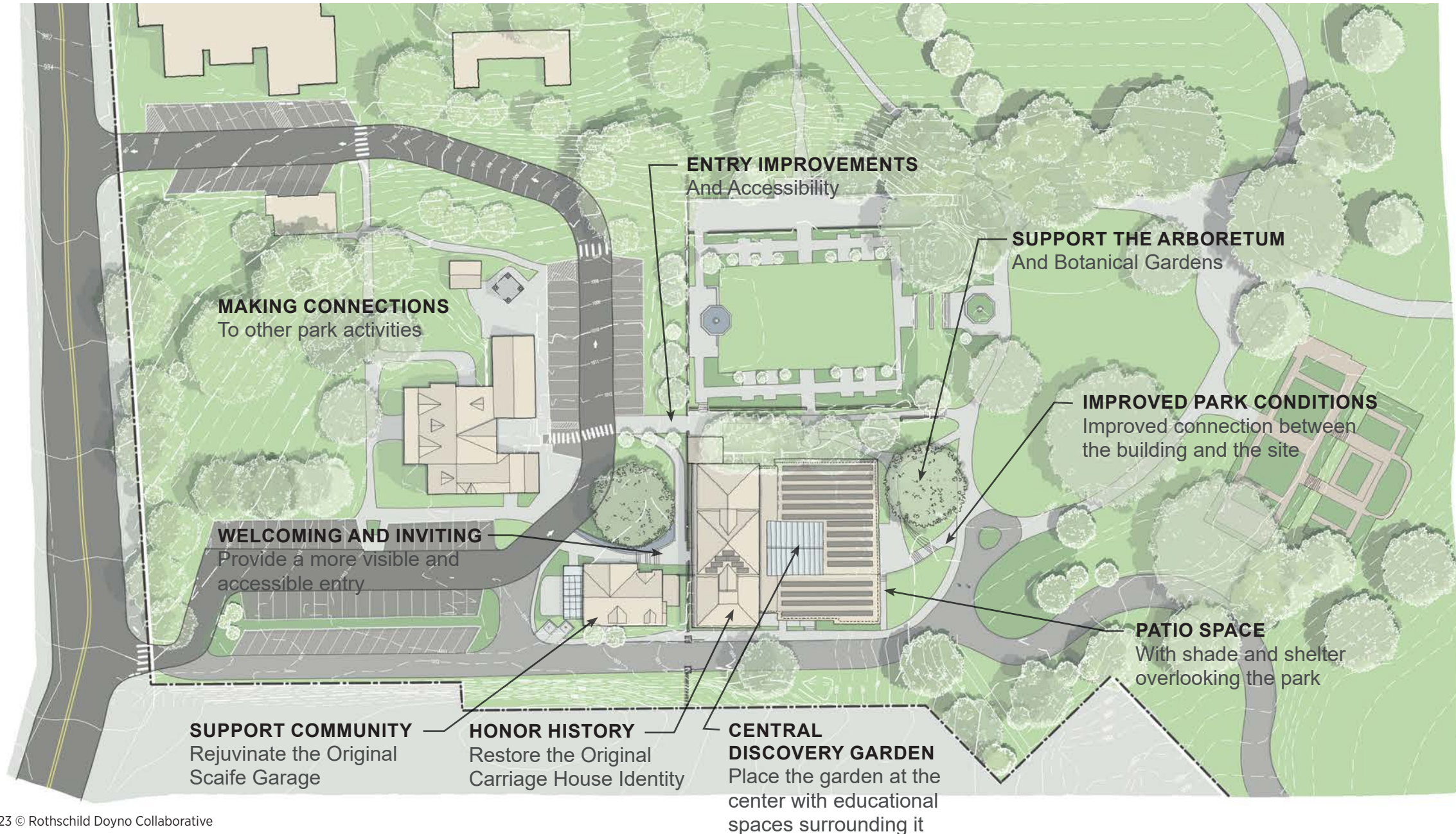


PHIPPS GARDEN CENTER AT MELLON PARK



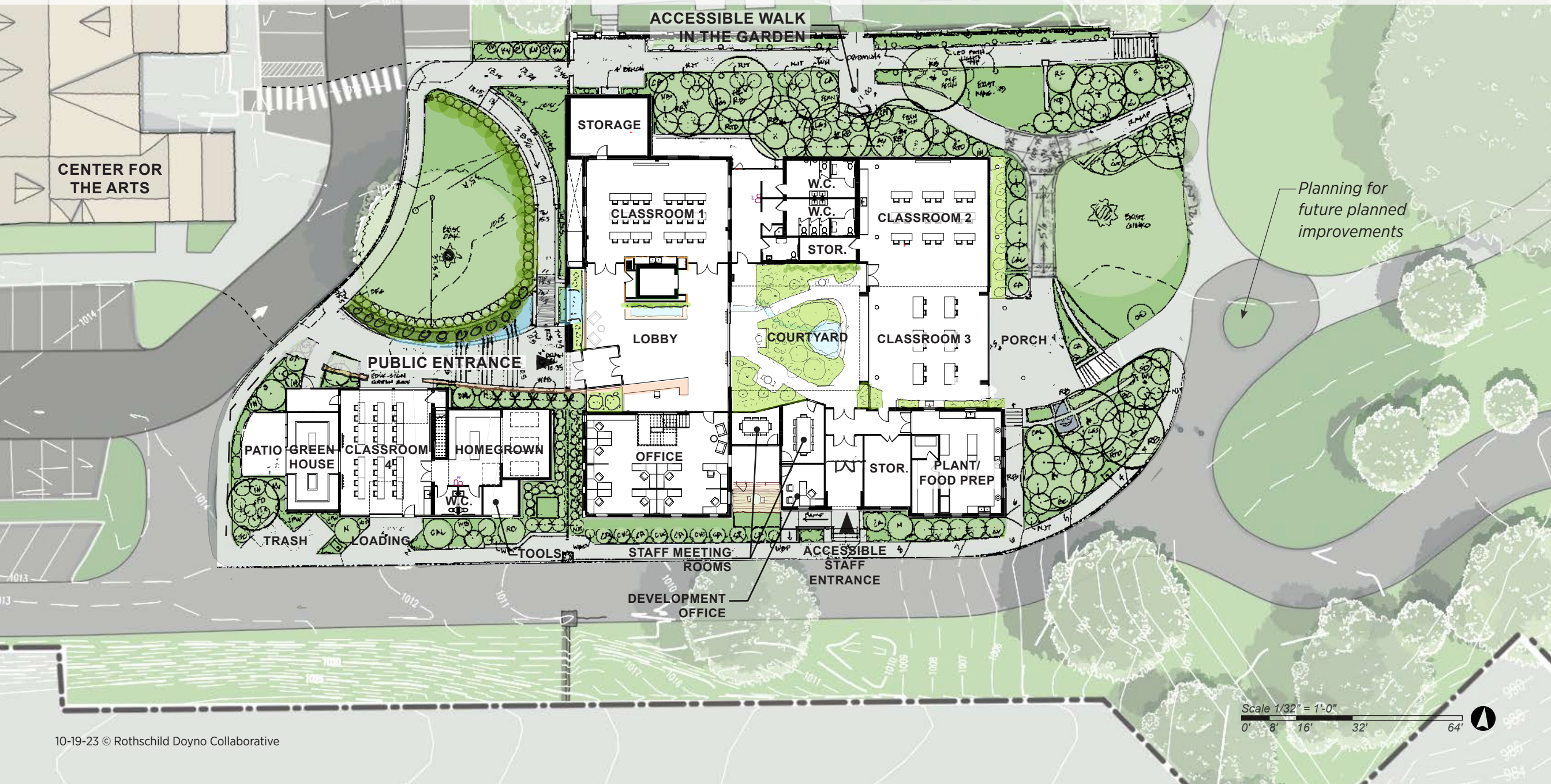
MASTER PLAN - "WHAT WE CAN HELP WITH"

Anticipating future Mellon Park Masterplan improvements



THE PHIPPS GARDEN CENTER AT MELLON PARK

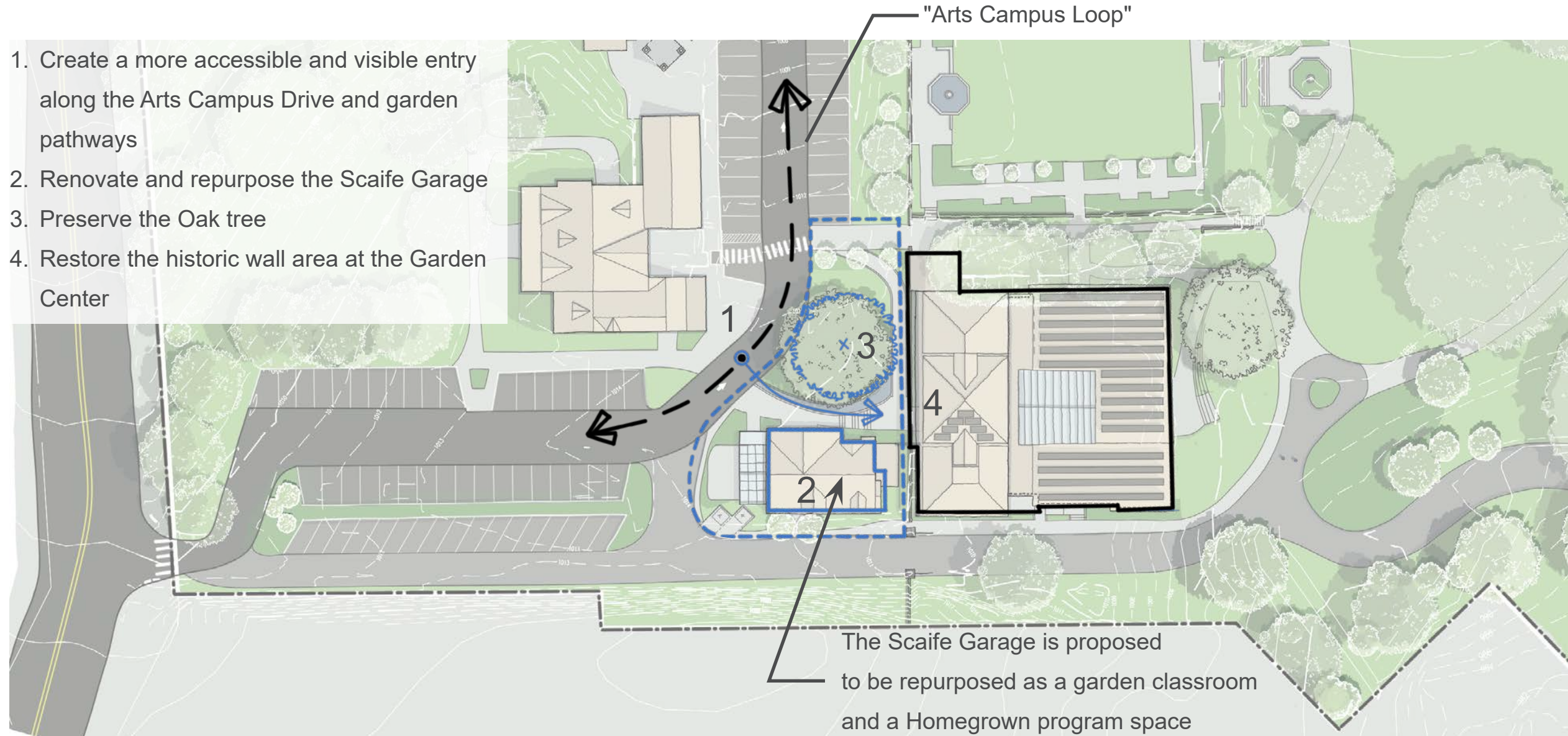
Proposed building and landscape improvements



A WELCOMING ENTRY

Shifting the entry for better visibility and access

1. Create a more accessible and visible entry along the Arts Campus Drive and garden pathways
2. Renovate and repurpose the Scaife Garage
3. Preserve the Oak tree
4. Restore the historic wall area at the Garden Center



EXISTING SERVICE YARD



Existing garden
entry

Mature tree canopy

Existing historical
garages in deteriorating
condition

Service yard up front

WELCOME TO THE GARDEN CENTER

And the Entry Patio Garden



RENEWING THE SCAIFE GARAGE SERVICE YARD

To become the entrance to the Garden Center

EXISTING



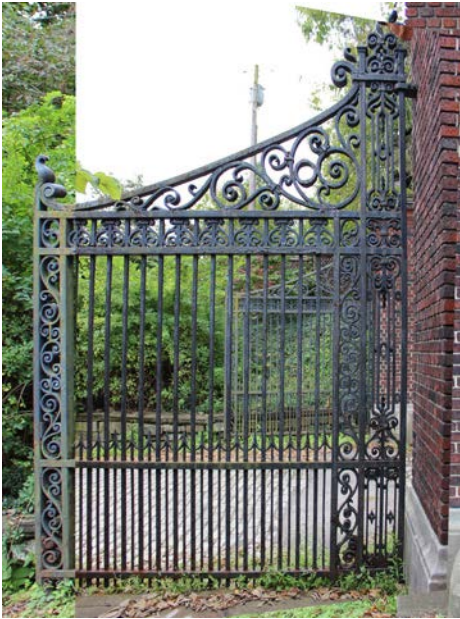
Stone walkways



Wood shingles



Slate shingles

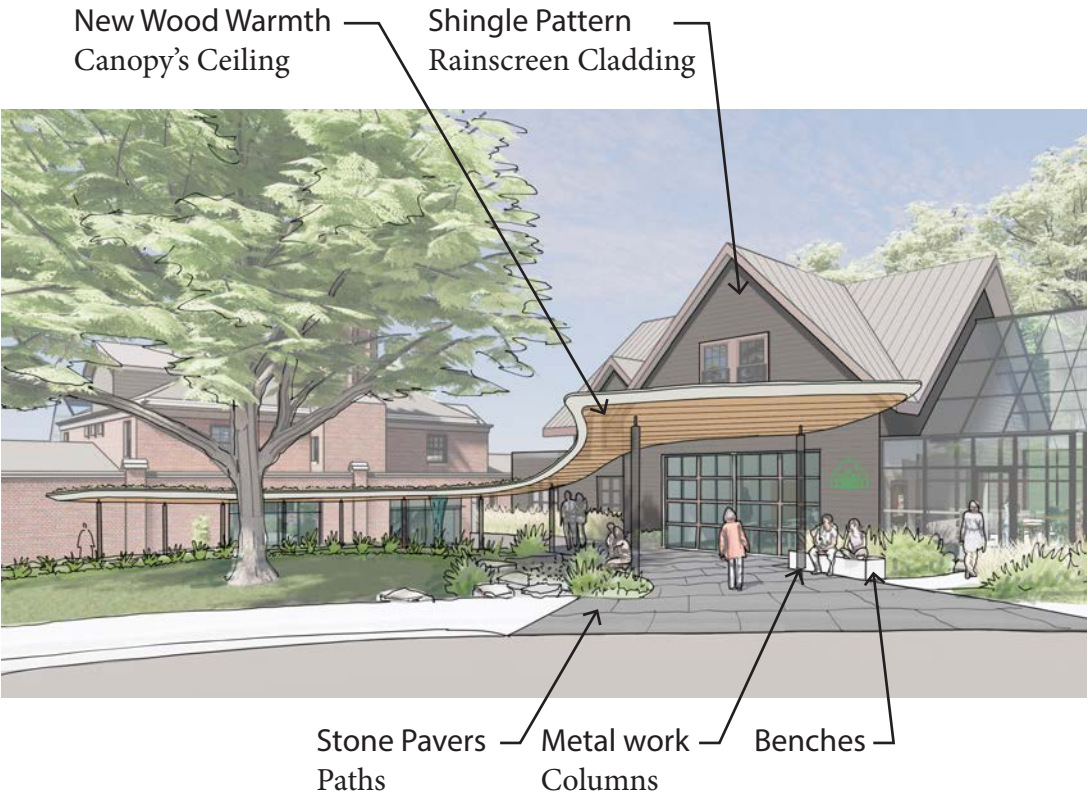


Metal work



Stone Bench

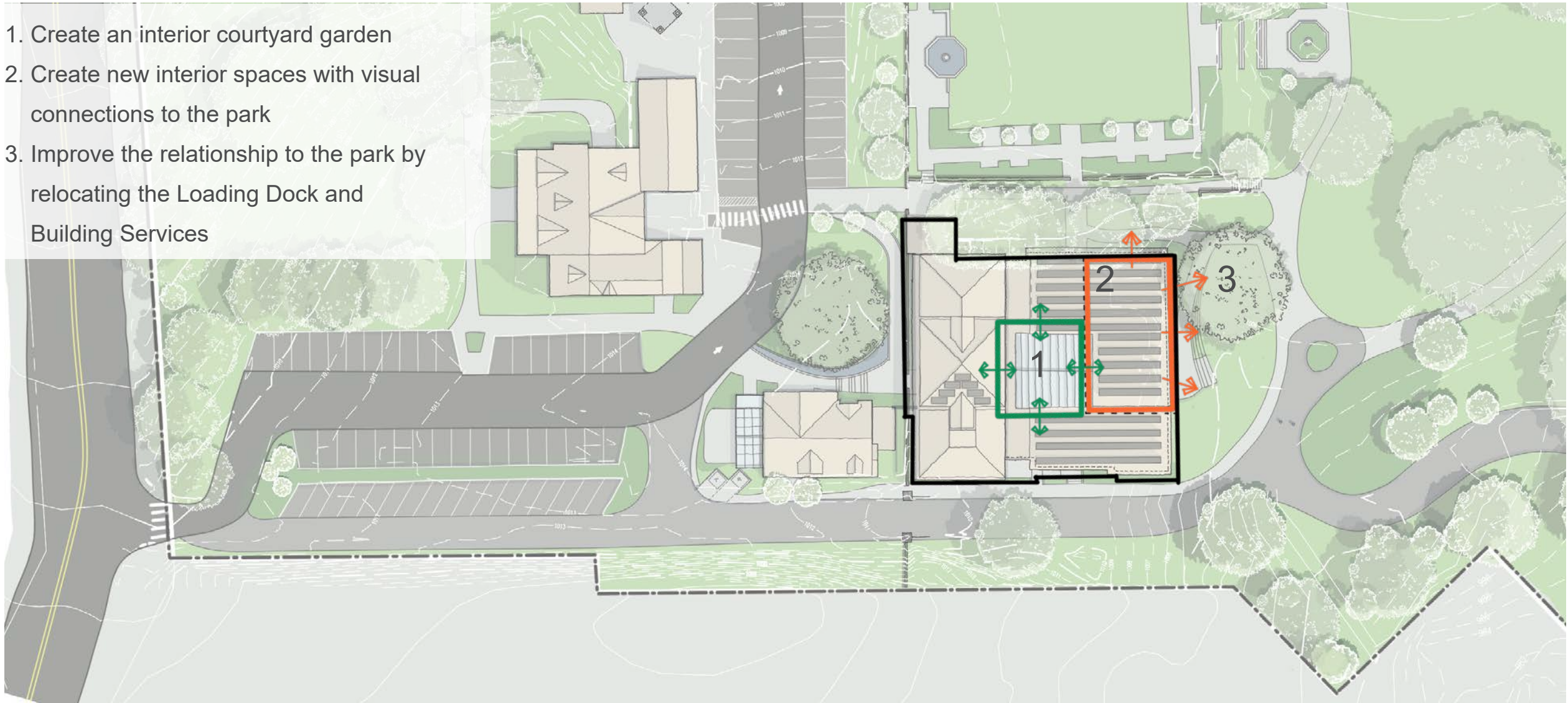
PROPOSED



GARDEN AT THE CENTER

Moving the Garden to the center of the building provides light and vegetation for users year-round

1. Create an interior courtyard garden
2. Create new interior spaces with visual connections to the park
3. Improve the relationship to the park by relocating the Loading Dock and Building Services



INSPIRING THROUGH NATURE

Creating harmony with the natural and built environment



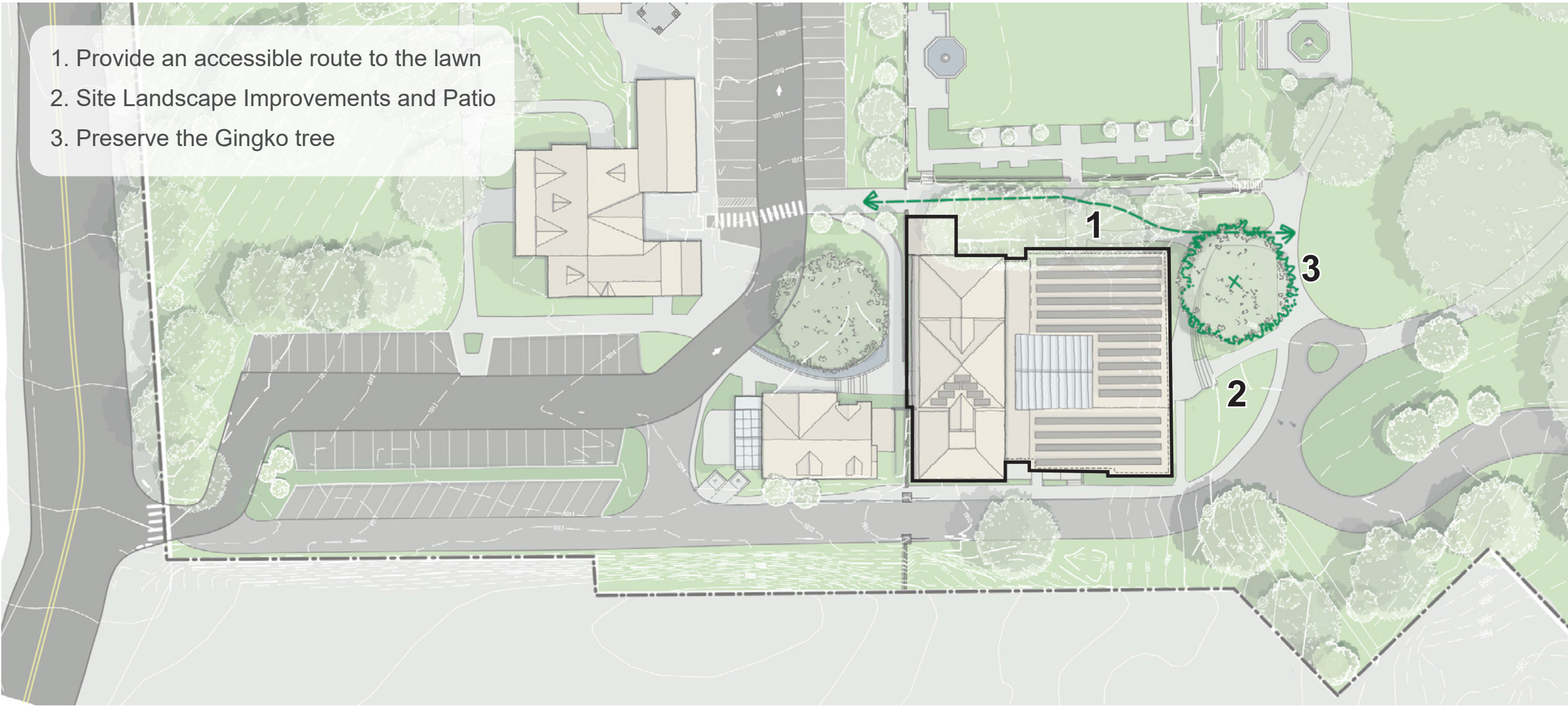
Isabella Stewart Gardner Museum



Palm Court Phipps Conservatory

FROM THE BUILDING TO THE PARK

Transitioning from Garden Center renovations to Mellon Park improvements



PERCEPTION FROM THE LAWN

Reinforcing strong relationships between the built and natural aspects in the park



FINDING BALANCE

Between the Built and Natural Environment



IT'S IN THE DETAIL

Finding material inspiration in Mellon Park

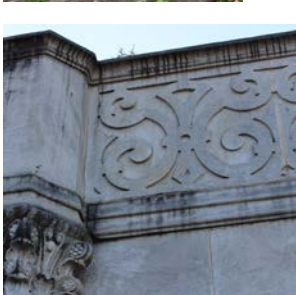
EXISTING



Terracota Tile



Terracota Baluster



Stone



Ironwork



Low stone retaining walls



Stone walkways



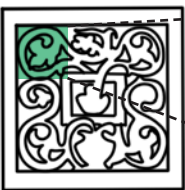
Terracotta Tile

PROPOSED

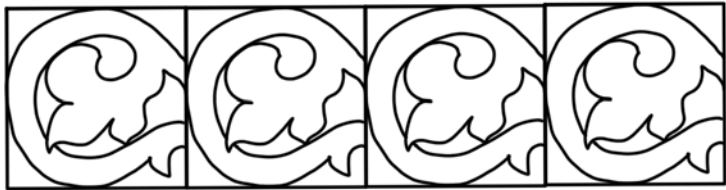


Terracotta details
New facade material

Stone Details
Site walls and paths

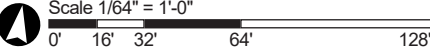
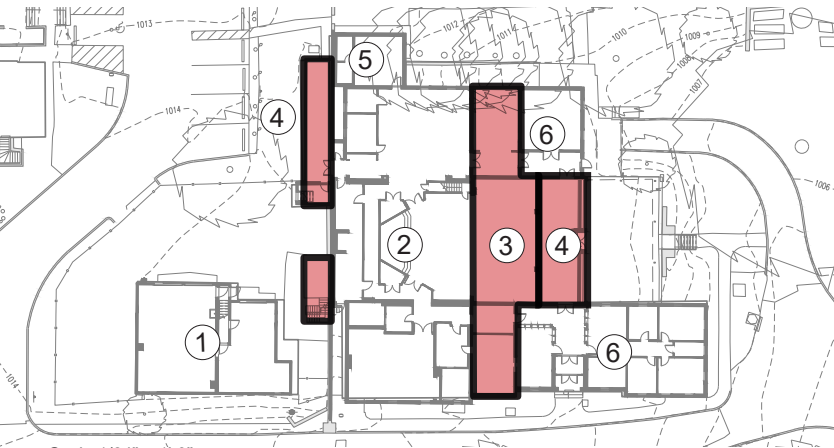
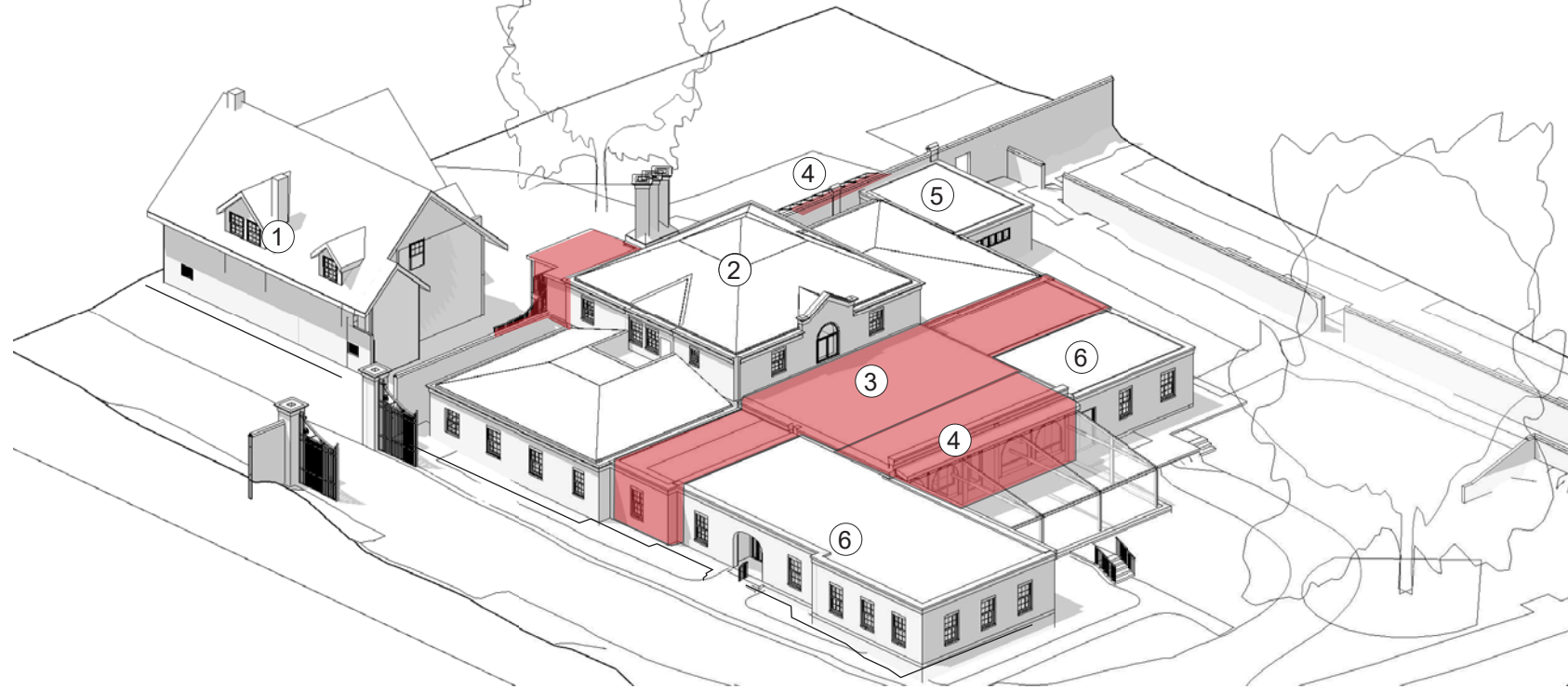


Traditional Terracotta



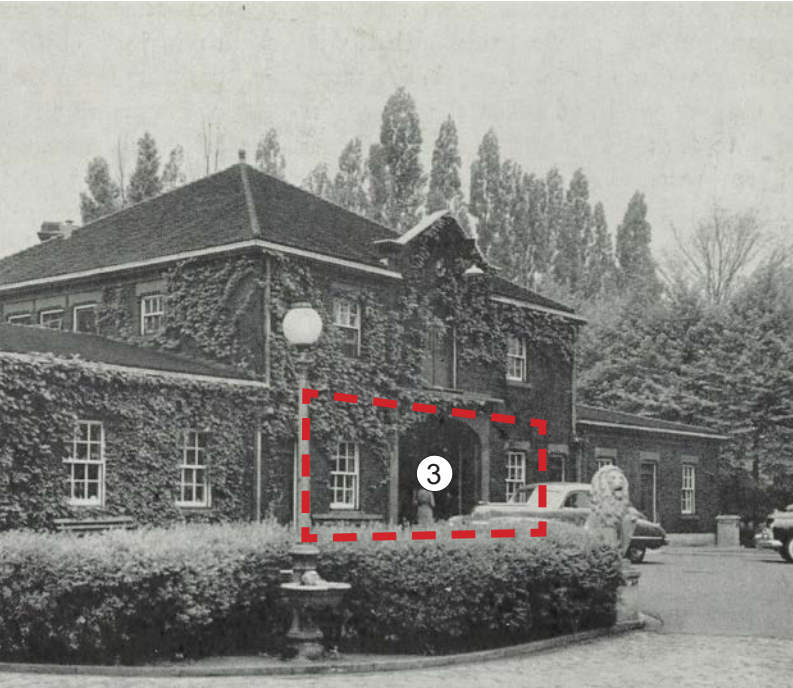
3D Printed Terracotta Tiles from portion of Pattern

UNCOVER HISTORY



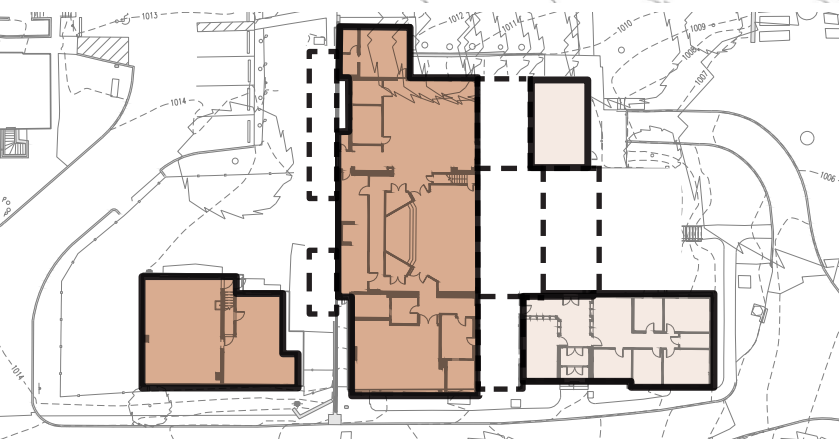
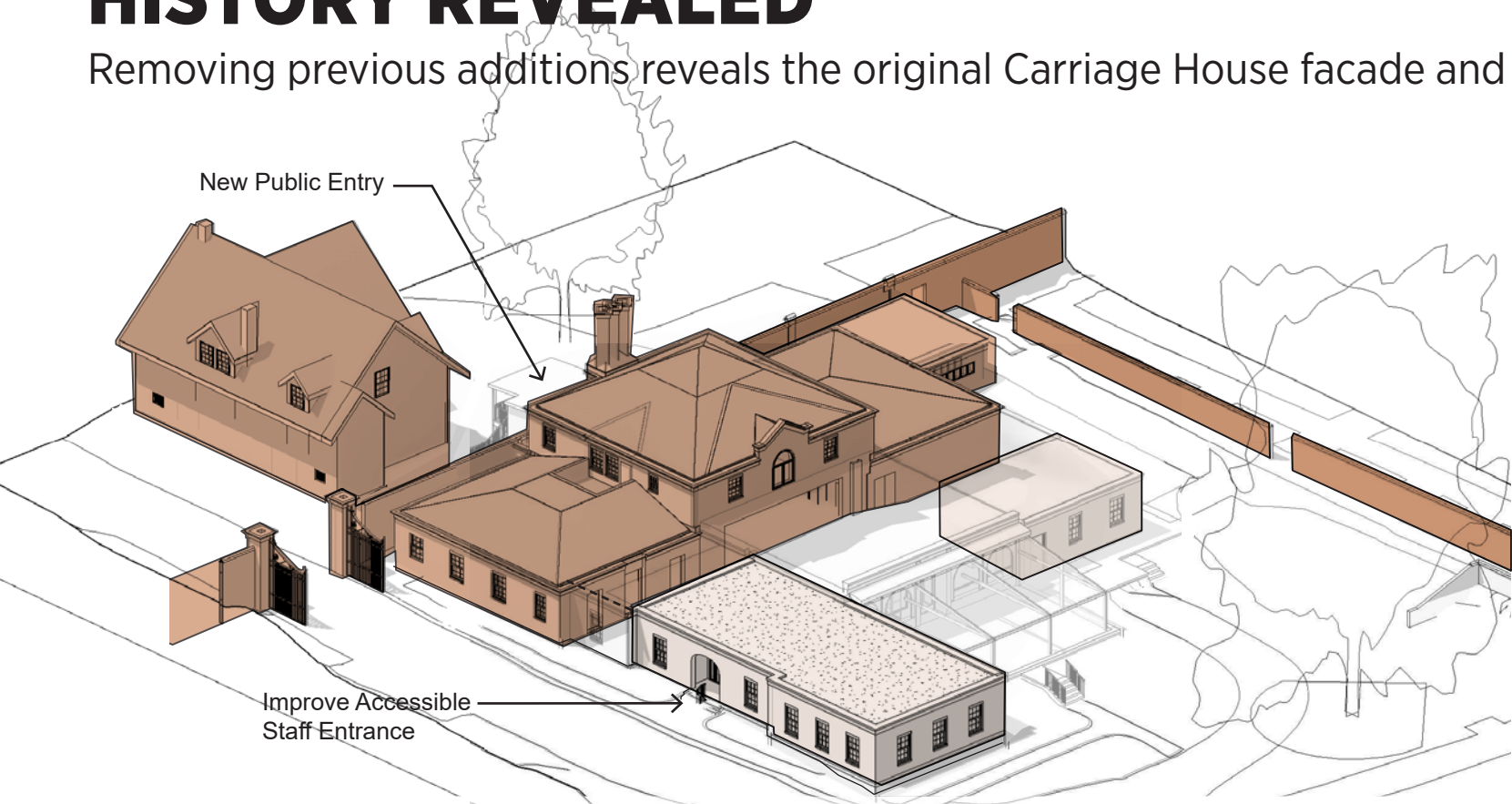
BUILDING HISTORY:

| | | |
|---|------|---|
| ① | 1908 | Dilworth House built—later the Scaife estate (Alden & Harlow) |
| ② | 1912 | Mellon mansion & carriage house built (Alden & Harlow) |
| | 1948 | The Pittsburgh Garden Center moves to Mellon Park and renovates the Mellon carriage house |
| ③ | 1955 | Addition (Charles M. & Edward Stotz, Jr.) |
| ④ | 1958 | Addition (Howard, Burt & Hill) |
| ⑤ | 1965 | Addition (Howard, Burt & Hill) |
| ⑥ | 1983 | Addition |



HISTORY REVEALED

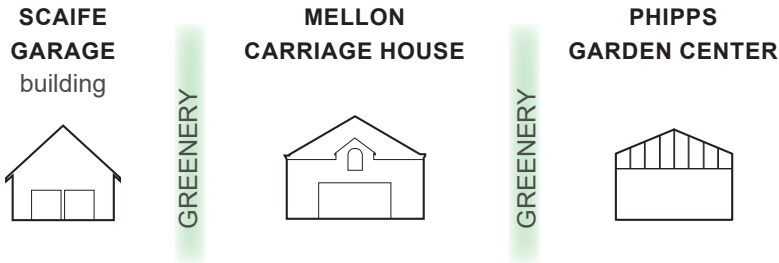
Removing previous additions reveals the original Carriage House facade and highlights three distinct pieces of the building



Scale 1/64" = 1'-0"

0' 16' 32' 64' 128'

10-19-23 © Rothschild Doyno Collaborative



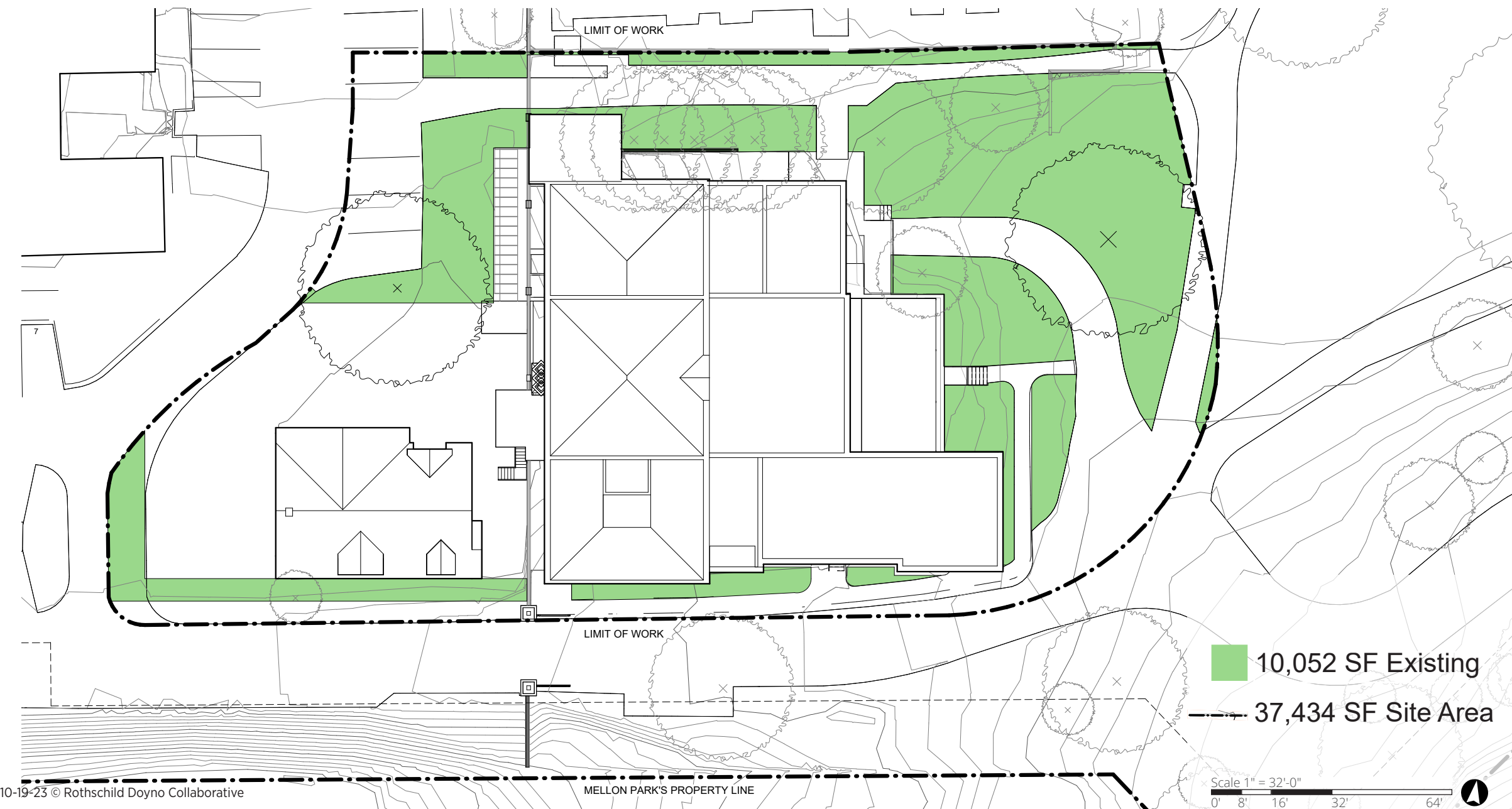
VIEW FROM THE WALLED GARDEN

Looking south



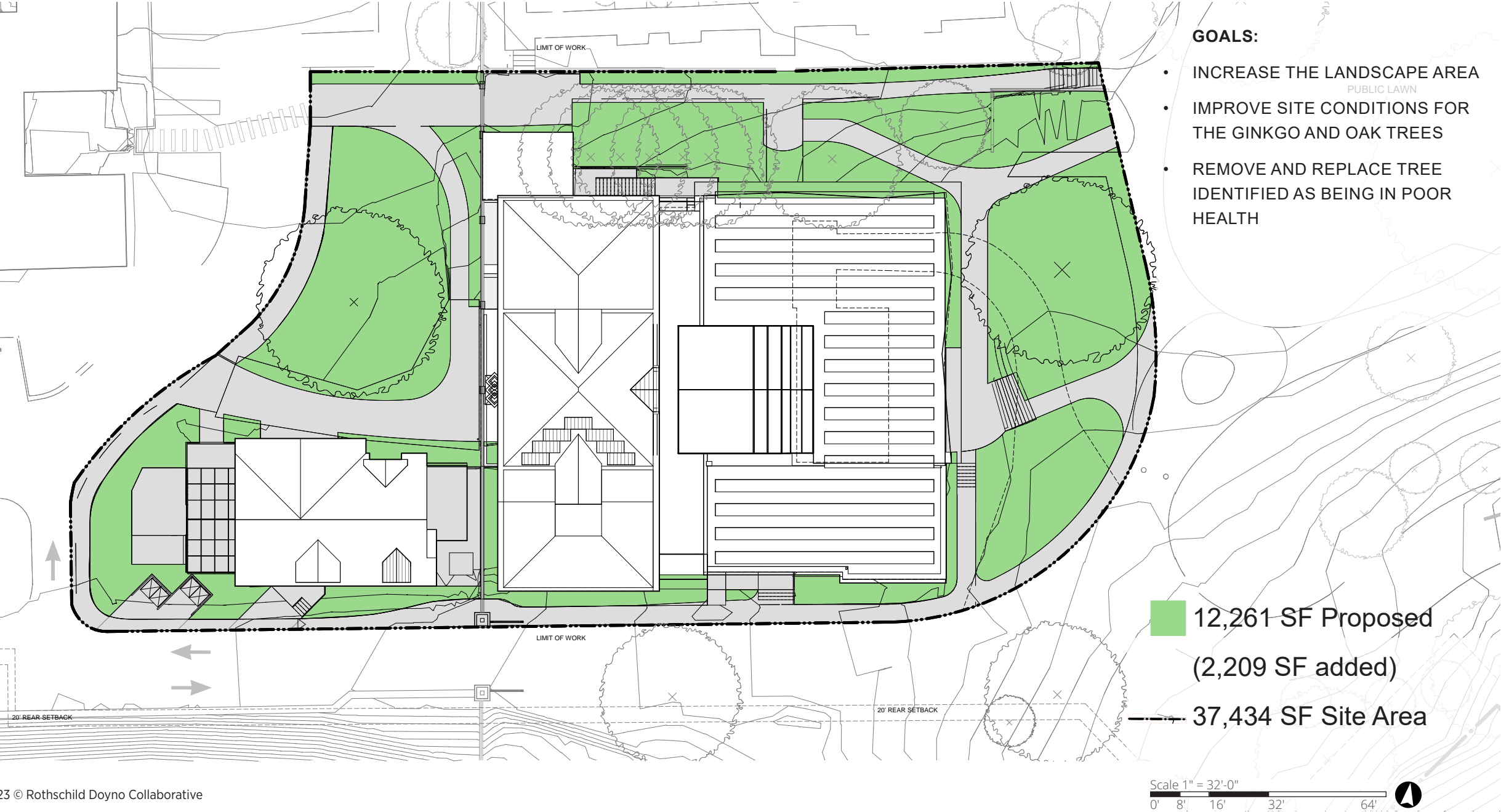
EXISTING GREEN SPACE

Current green space is limited by existing pavement and vehicle access.



INCREASING GREEN SPACE

The proposed design reduces hardscape coverage allowing for more green space



A REGENERATIVE FUTURE

Restoring the historic buildings while improving the educational spaces.

